

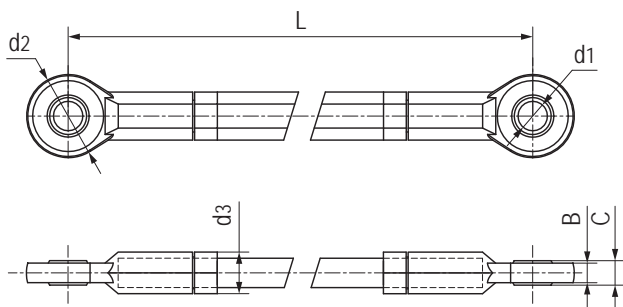
## GVCE双杆端关节轴承 Double spherical bearings



### 产品特性 Product features

- 球体采用高耐磨材料EPB15制成
  - 保持器采用高强度和尺寸稳定性材料M163制成
  - 连接器采用高强度铝合金
  - 自润滑、免维护
  - 无噪音和易安装
  - 轴承相对角度可调节
  - 中心距根据需求
- Spherical ball made of highly wear-resistant EPB15
  - Housing made of high strength and shape-stable M163
  - Connection rod made of high strength aluminum alloy
  - Maintenance-free dry operation
  - No noise and easy installation
  - The position angle of bearings can be adjusted
  - The center distance up on request

### 标准规格 Standard specifications



产品编码 Part No.:

GVCE-06-000

└─ 中心距 Center distance

└─ 内径 Inner diameter

产品编码 Part No.	d <sub>1</sub> [mm]	d <sub>2</sub> [mm]	d <sub>3</sub> [mm]	L (Min) (最小值)	C [mm]	B [mm]	最大调节角度 Max. pivot angle
GVCE-06-000	6	21	10	73	6	4.4	27°
GVCE-08-000	8	24	13	89	8	6	24°
GVCE-10-000	10	29	15	105	9	7	24°
GVCE-12-000	12	34	17	121	10	8	35°